

# FINAL PLAT DRAFT of SILVER CROSS BUSINESS PARK

A REPLAT OF A PART OF LOT 8 AND ALL OF LOT 9 IN BLOCK 1, AND PART OF LOTS 1 & 2, BLOCK 5, SILVER SPRINGS CROSSING; BEING A PART OF THE SOUTHWEST QUARTER (SW/4) OF SECTION THIRTY-TWO (32), TOWNSHIP THIRTEEN (13) NORTH, RANGE FOUR (4) WEST OF THE INDIAN MERIDIAN, OKLAHOMA COUNTY, OKLAHOMA

SUBDIVISION CONTAINS:  
TWENTY-FIVE (25) LOTS IN  
TWO (2) BLOCKS  
GROSS SUBDIVISION AREA:  
±1,484,314 SQ. FT.  
OR ±34.08 ACRES

B/L = BUILDING LINE  
U/E = PUBLIC UTILITY EASEMENT  
PD/AE = PRIVATE DRIVE/ACCESS EASEMENT  
PDE = PRIVATE DRAINAGE EASEMENT  
R/W = RIGHT OF WAY  
ESMT = EASEMENT

LNA = LIMITS OF NO ACCESS

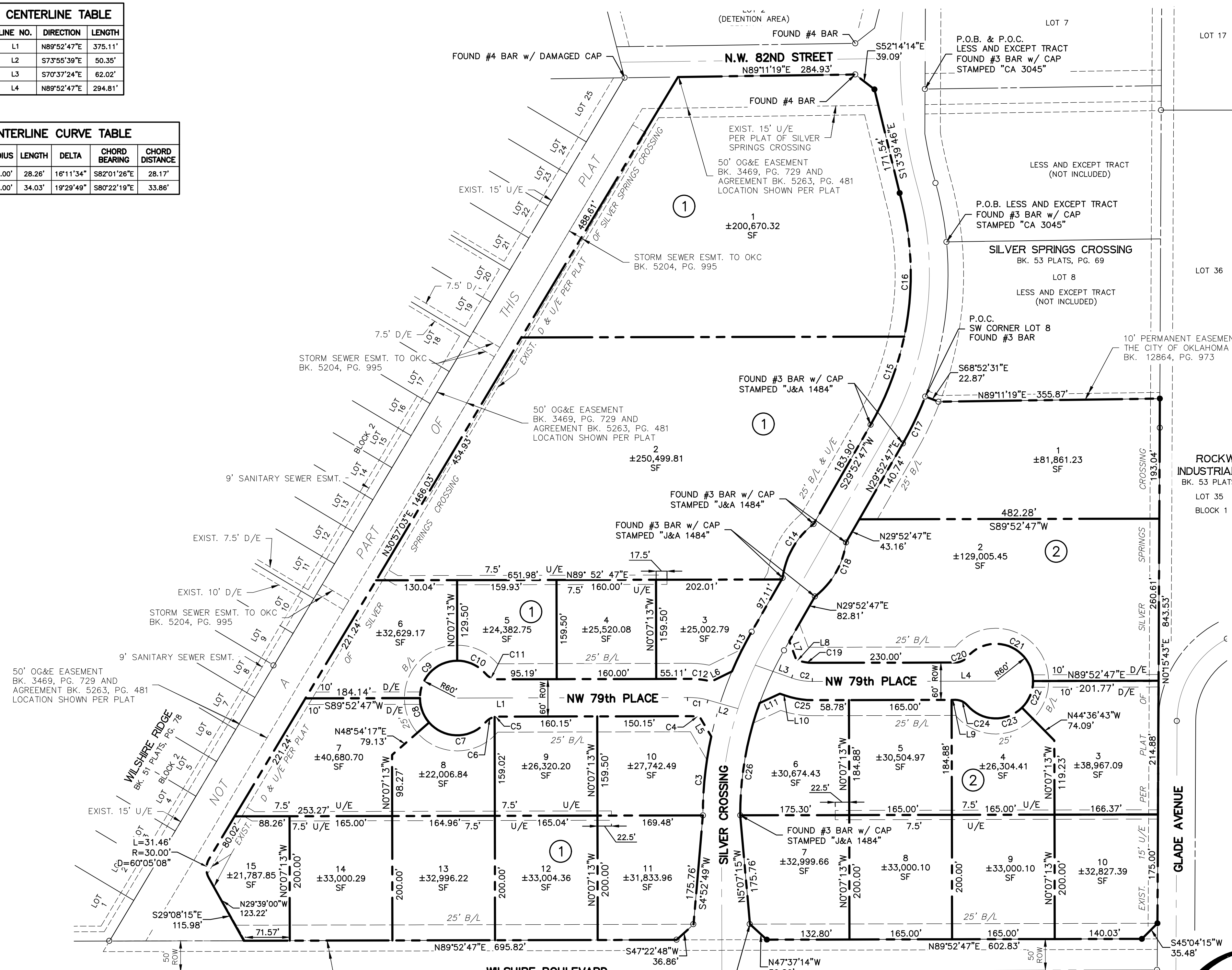
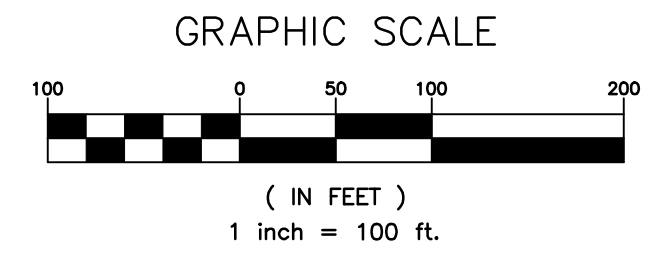
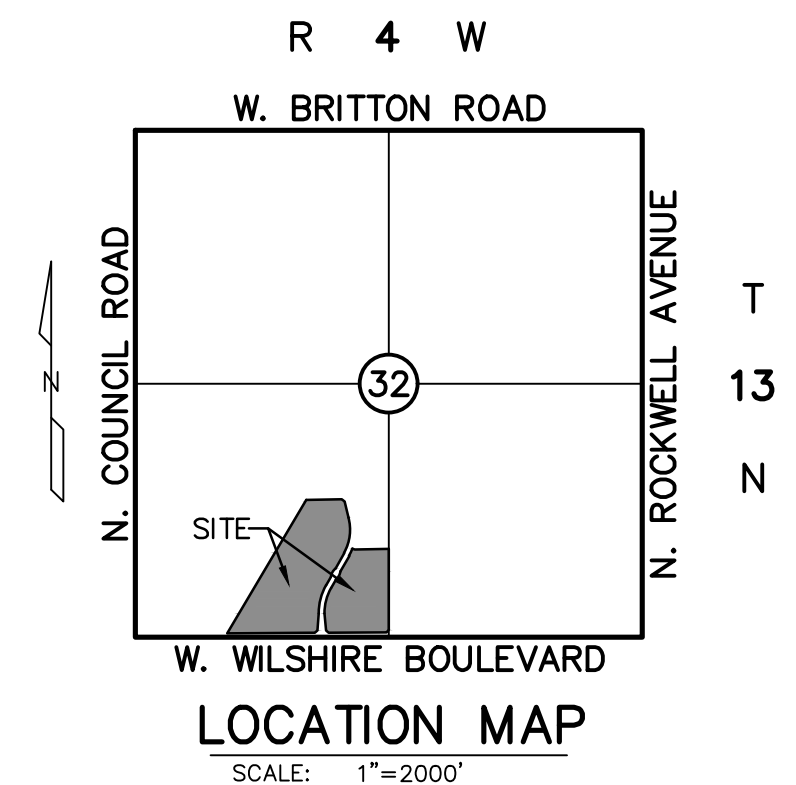
○ = FOUND #3 BAR W/ CAP UNLESS OTHERWISE NOTED  
● = SET #3 BAR W/ CAP STAMPED "DURHAM CA 5313" UNLESS OTHERWISE NOTED  
▲ = SET MAG NAIL W/ SHINER STAMPED "DURHAM CA 5313" UNLESS OTHERWISE NOTED

LINE NO.	DIRECTION	LENGTH
L1	N89°52'47"E	375.11'
L2	S73°55'39"E	50.35'
L3	S70°37'24"E	62.02'
L4	N89°52'47"E	284.81'

CURVE NO.	RADIUS	LENGTH	DELTA	CHORD BEARING	CHORD DISTANCE
C1	100.00'	28.26'	16°11'34"	S82°01'26"E	28.17'
C2	100.00'	34.03'	19°29'49"	S80°22'19"E	33.86'

LINE NO.	DIRECTION	LENGTH
L6	S63°52'43"W	37.09'
L7	N20°26'16"W	32.02'
L8	N70°37'24"W	2.62'
L9	N89°52'47"E	6.22'
L10	S70°37'24"E	9.34'
L11	N65°15'49"E	35.90'

CURVE NO.	RADIUS	LENGTH	DELTA	CHORD BEARING	CHORD DISTANCE
C3	589.81'	127.77'	12°24'42"	S6°05'09"W	127.52'
C8	60.00'	42.91'	40°58'30"	N20°36'28"W	42.00'
C12	130.00'	33.66'	14°50'12"	N82°42'07"W	33.57'
C13	589.81'	71.00'	6°53'51"	S26°25'52"W	70.96'
C14	130.00'	102.65'	45°14'23"	S29°52'47"W	100.00'
C16	485.95'	233.15'	27°29'22"	S1°49'40"E	230.92'
C17	545.95'	83.42'	8°45'17"	N25°30'08"E	83.34'
C18	130.00'	102.65'	45°14'23"	N29°52'47"E	100.00'
C19	70.00'	23.82'	19°29'49"	N80°22'19"W	23.71'
C20	25.00'	21.68'	49°40'47"	S65°02'23"W	21.00'
C21	60.00'	146.27'	139°40'47"	N69°57'37"W	112.65'
C22	60.00'	47.66'	49°30'30"	N22°38'02"E	46.41'
C23	60.00'	98.62'	94°10'17"	S87°31'35"E	87.88'
C24	25.00'	21.68'	49°40'47"	S65°16'49"E	21.00'
C25	130.00'	44.24'	19°29'49"	S80°22'19"E	44.02'
C26	529.81'	184.18'	19°55'06"	N9°50'22"E	183.26'



P.O.B. TRACT 1 & P.O.C. FOR L&E TRACTS 1, 2, AND 3  
P.O.C. FOR TRACTS 2, 3 AND 4  
SW COR., SW/4, SEC. 32 PER MONUMENTS FOR LEGAL  
DESCRIPTIONS & WILSHIRE RIDGE ADDITION IN SW/4  
OF SEC. 32 & MONUMENTS FOR LOWERY ESTATES  
ADDITION IN SE/4 OF SEC. 31  
SET MAG NAIL W/ SHINER "DURHAM CA 5313"  
FOUND BROKEN MAG NAIL 4.68"N & 0.46"E

NE COR., NE/4, SEC. 4  
FOUND MAG NAIL W/  
"CA 3949" SHINER  
1.54' N OF THE SOUTH  
LINE OF SW/4, SEC. 32

**DURHAM SURVEYING, INC.**  
1800 SOUTH SARA ROAD, YUKON, OKLAHOMA 73099

Ph: (405) 265-3404 Fax: (405) 265-0649 CERTIFICATE OF AUTHORIZATION NO. 5313 EXPIRATION DATE: JUNE 30, 2020

**RUBBS CONSULTING, LLC**  
CIVIL ENGINEERING & LAND PLANNING  
1800 S. Sara Road  
Yukon, OK 73099  
Phone: (405) 265-0641  
Fax: (405) 265-0649

GRUBBS CONSULTING, LLC CERTIFICATE OF AUTHORIZATION NO. CA 5115 EXP. 06/30/20