

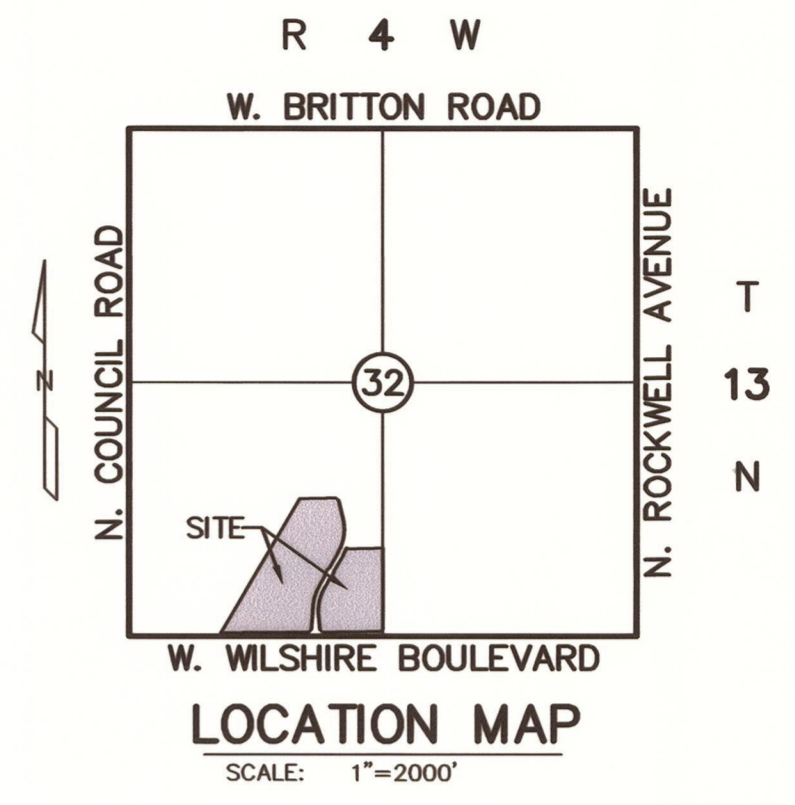
FINAL PLAT

SILVER CROSS BUSINESS PARK

A REPLAT OF A PART OF LOT 8 AND ALL OF LOT 9 IN BLOCK 1, AND PART OF LOTS 1 & 2, BLOCK 5, SILVER SPRINGS CROSSING; BEING A PART OF THE SOUTHWEST QUARTER (SW/4) OF SECTION THIRTY-TWO (32), TOWNSHIP THIRTEEN (13) NORTH, RANGE FOUR (4) WEST OF THE INDIAN MERIDIAN, OKLAHOMA COUNTY, OKLAHOMA

DEVELOPER:
SILVER CROSS BUSINESS PARK, LLC
PO BOX 721413
OKLAHOMA CITY, OKLAHOMA 73172

ENGINEER:
GRUBBS CONSULTING, LLC
1800 S. SARA ROAD
YUKON, OKLAHOMA 73099
(405) 265-0641



- PC=PAGE
- BK=BOOK
- CA = COMMON AREA
- B/L = BUILDING LINE
- U/E = PUBLIC UTILITY EASEMENT
- D/E = PRIVATE DRAINAGE EASEMENT
- PD/E = PRIVATE DRAINAGE EASEMENT
- ROW = RIGHT OF WAY
- ESMT = EASEMENT
- LNA = LIMITS OF NO ACCESS
- = FOUND #3 BAR W/ CAP UNLESS OTHERWISE NOTED
- = SET #3 BAR W/ CAP STAMPED "DURHAM CA 5313" UNLESS OTHERWISE NOTED
- ▲ = SET MAG NAIL W/ SHINER STAMPED "DURHAM CA 5313" UNLESS OTHERWISE NOTED
- (X) = BLOCK NO.

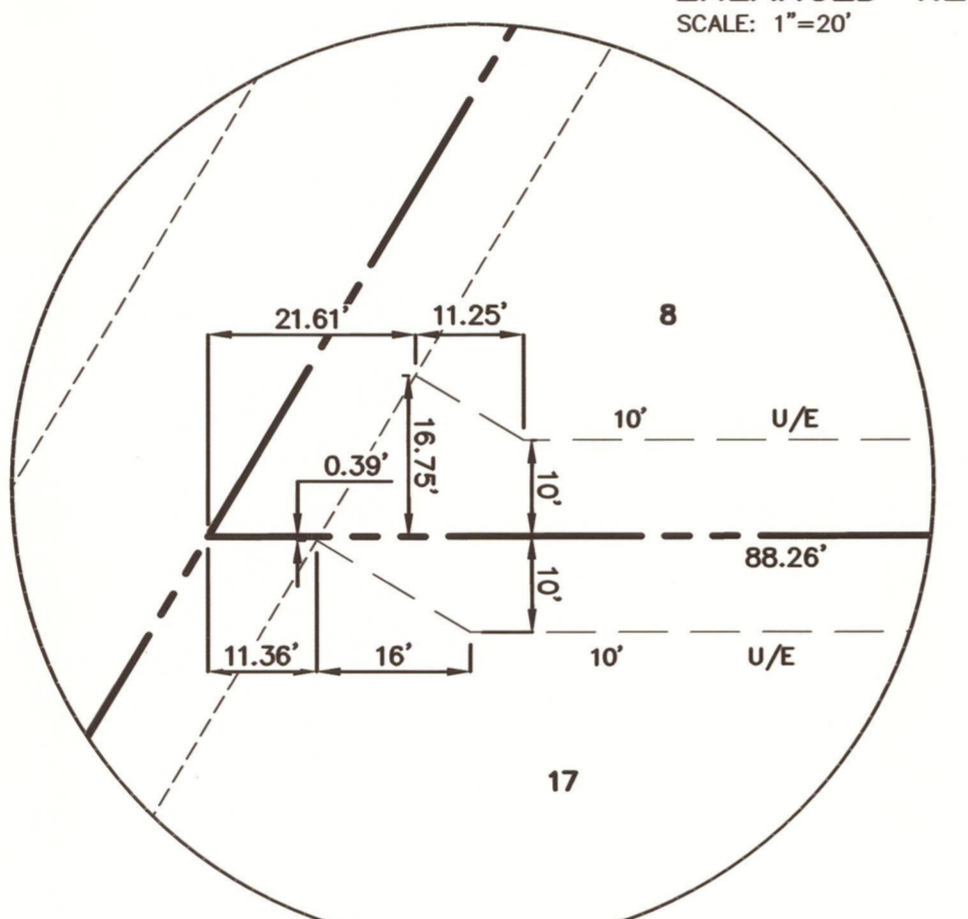
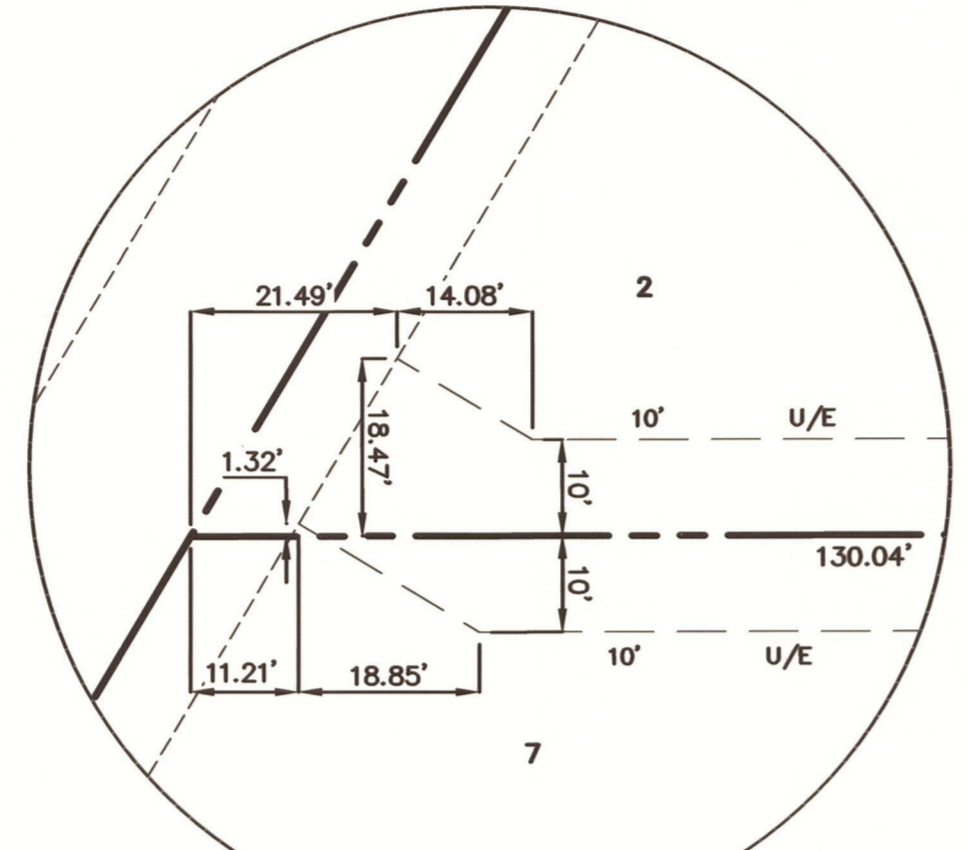
SUBDIVISION CONTAINS:
TWENTY-EIGHT (28) LOTS IN
TWO (2) BLOCKS
GROSS SUBDIVISION AREA:
±1,361,659 SQ. FT.
OR ±31.2594 ACRES

LINE NO.	DIRECTION	LENGTH
L1	N89°52'47"E	290.20'
L2	S74°04'21"E	90.47'
L3	S62°46'50"E	31.13'
L4	N89°52'47"E	236.34'

CURVE NO.	RADIUS	LENGTH	DELTA	CHORD BEARING	CHORD DISTANCE
C1	250.00'	70.02'	16°02'52"	S82°05'47"E	69.79'
C2	250.00'	119.29'	27°20'23"	S76°27'02"E	118.16'

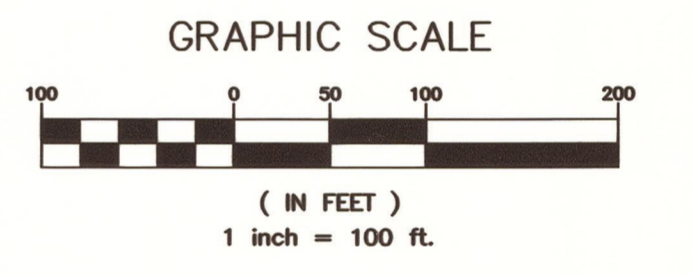
LINE NO.	DIRECTION	LENGTH
L5	S31°08'22"E	36.60'
L6	S62°59'40"W	36.60'
L7	S18°01'18"E	33.50'
L8	N89°52'47"E	0.31'
L9	N68°39'45"E	34.70'

CURVE NO.	RADIUS	LENGTH	DELTA	CHORD BEARING	CHORD DISTANCE
C3	589.82'	110.18'	10°42'12"	N5°13'54"E	110.02'
C4	220.00'	61.62'	16°02'52"	S82°05'47"E	61.42'
C5	25.00'	21.88'	49°40'47"	N85°02'23"E	21.00'
C6	60.00'	51.07'	48°46'11"	N64°35'05"E	49.54'
C7	60.00'	45.61'	43°33'16"	S69°15'12"E	44.52'
C8	60.00'	49.59'	47°21'20"	N23°47'53"W	48.19'
C9	60.00'	94.32'	90°04'19"	S44°54'57"W	84.91'
C10	60.00'	51.95'	49°36'28"	N85°14'40"W	50.34'
C11	25.00'	21.88'	49°40'47"	N85°16'49"W	21.00'
C12	280.00'	29.86'	6°06'38"	N87°03'54"W	29.85'
C13	280.00'	46.56'	9°56'14"	N79°02'28"W	46.50'
C14	589.81'	88.61'	8°36'30"	S25°34'32"W	88.53'
C15	130.00'	102.65'	45°14'23"	S29°52'47"W	100.00'
C16	485.95'	152.35'	17°57'46"	S20°53'54"W	151.73'
C17	485.95'	233.15'	27°29'22"	N1°49'40"W	230.92'
C18	545.95'	83.42'	8°45'17"	S25°30'08"W	83.34'
C19	130.00'	102.65'	45°14'23"	N29°52'47"E	100.00'
C20	220.00'	60.28'	20°54'29"	N79°38'59"W	79.84'
C21	25.00'	21.88'	49°40'47"	S85°02'23"W	21.00'
C22	60.00'	146.27'	139°40'47"	N69°57'37"W	112.85'
C23	60.00'	47.66'	45°30'30"	N22°38'02"E	46.41'
C24	60.00'	62.82'	59°59'22"	N75°22'58"E	59.99'
C25	60.00'	35.80'	34°10'56"	S57°31'54"E	35.27'
C26	25.00'	21.88'	49°40'47"	N85°16'49"W	21.00'
C27	280.00'	108.88'	22°16'50"	S78°58'48"E	108.20'
C28	529.81'	13.60'	1°28'16"	N20°32'03"E	13.60'
C29	529.81'	184.18'	19°55'06"	N9°50'22"E	183.26'
C30	30.00'	31.46'	60°05'06"	S0°54'24"W	30.04'



ENLARGED VIEW 1
SCALE: 1"=20'

ENLARGED VIEW 2
(THIS SHEET)
SCALE: 1"=20'



SW COR., SW/4, SEC. 32
SET MAG NAIL w/ SHINER

DURHAM SURVEYING, INC.
1800 SOUTH SARA ROAD, YUKON, OKLAHOMA 73099
Ph. (405) 265-3404 Fax (405) 265-0649 CERTIFICATE OF AUTHORIZATION NO. 5313 EXPIRATION DATE: JUNE 30, 2022

GRUBBS CONSULTING, LLC
CIVIL ENGINEERING & LAND PLANNING
1800 S. Sara Road
Yukon, OK 73099
Phone: (405) 265-0641
Fax: (405) 265-0649
GRUBBS CONSULTING, LLC CERTIFICATE OF AUTHORIZATION NO. CA 5115 EXP. 06/30/22