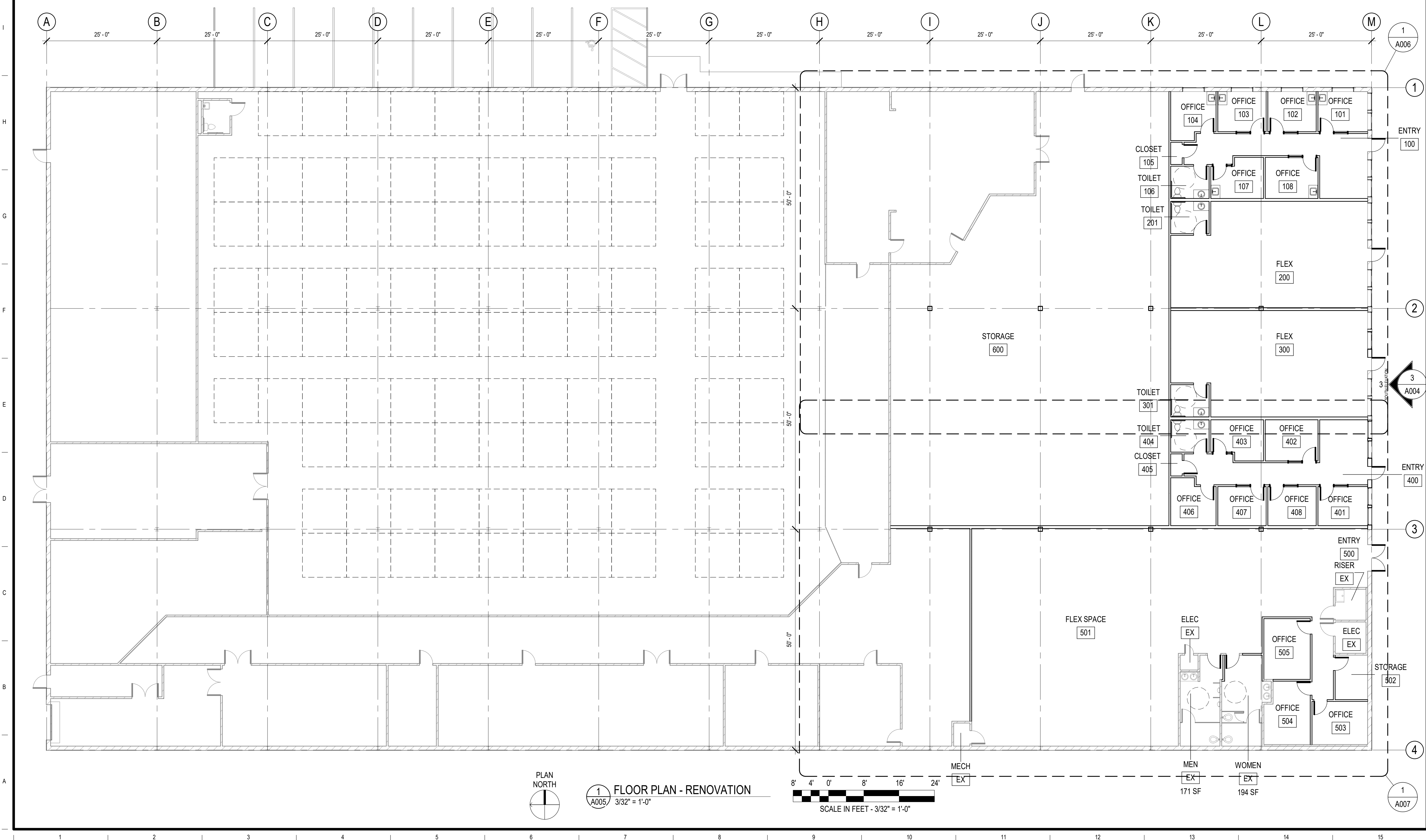


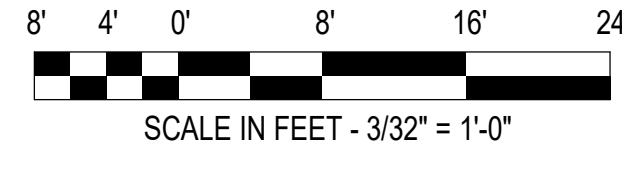
100	ENTRY	330 SF	
101	OFFICE	102 SF	
102	OFFICE	99 SF	
103	OFFICE	99 SF	
104	OFFICE	104 SF	
105	CLOSET	13 SF	
106	TOILET	63 SF	
107	OFFICE	100 SF	
108	OFFICE	111 SF	
200	FLEX	1004 SF	
201	TOILET	63 SF	
300	FLEX	1004 SF	
301	TOILET	63 SF	

400	ENTRY	330 SF	
401	OFFICE	99 SF	
402	OFFICE	111 SF	
403	OFFICE	100 SF	
404	TOILET	63 SF	
405	CLOSET	13 SF	
406	OFFICE	101 SF	
407	OFFICE	97 SF	
408	OFFICE	97 SF	
500	ENTRY	291 SF	
501	FLEX SPACE	3068 SF	
502	STORAGE	74 SF	
503	OFFICE	123 SF	

504	OFFICE	140 SF	
505	OFFICE	144 SF	
600	STORAGE	5137 SF	
EX	MEN	171 SF	
EX	WOMEN	194 SF	
EX	RISER	49 SF	
EX	ELEC	50 SF	
EX	ELEC	14 SF	
EX	MECH	19 SF	



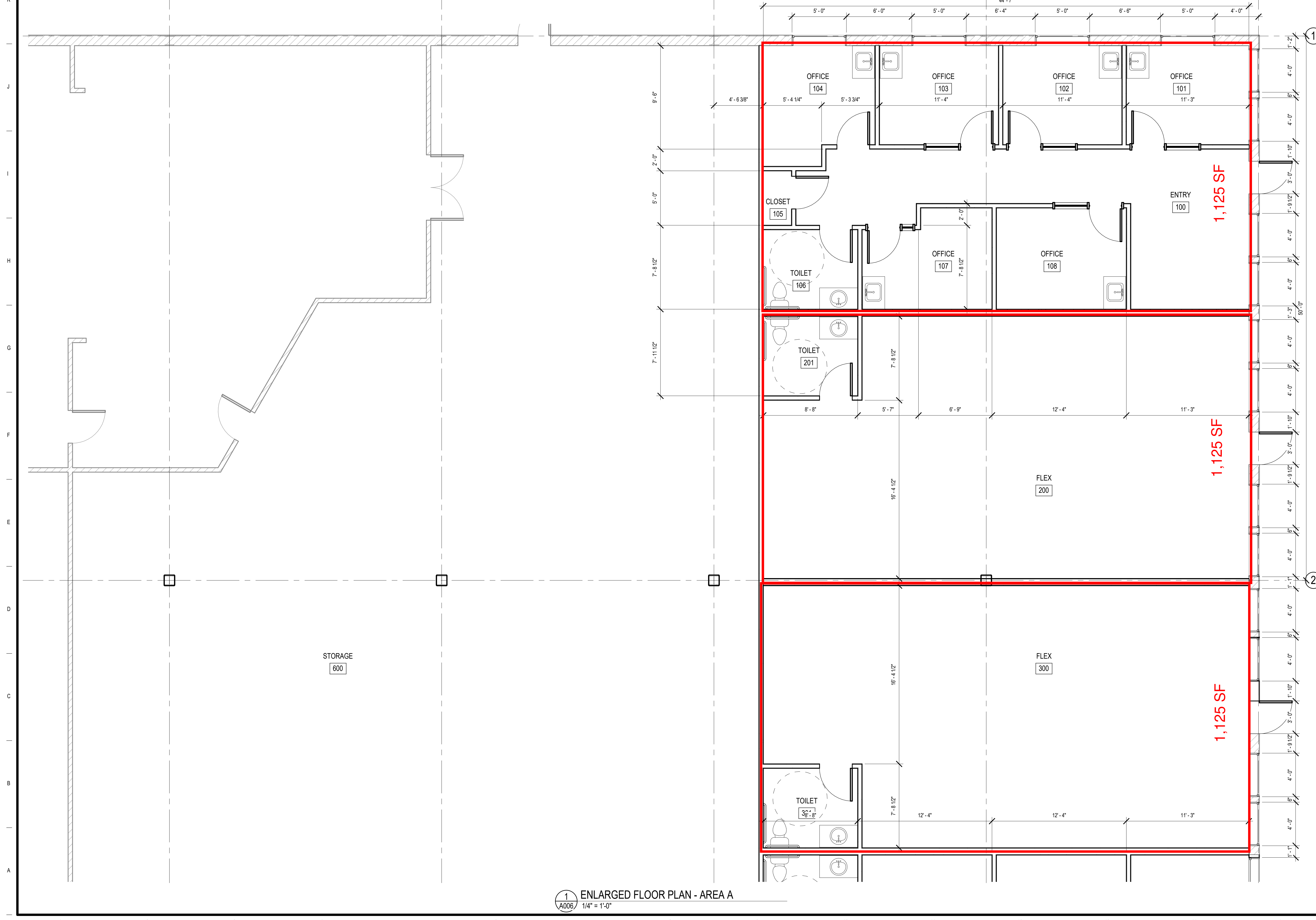
1 FLOOR PLAN - RENOVATION
A005 3/32" = 1'-0"



PAYLESS STORAGE RENOVATION
8821 NORTHWEST EXPRESSWAY
OKLAHOMA CITY, OKLAHOMA COUNTY, OKLAHOMA

DESIGNED BY
DRAWN BY
CHECKED BY
APPROVED BY

DATE 09/03/2011
SCALE 3/32" = 1'-0"
PROJECT NUMBER 0000
SHEET A005



1 ENLARGED FLOOR PLAN - AREA A
 A006 1/4" = 1'-0"

PAYLESS STORAGE RENOVATION
 8821 NORTHWEST EXPRESSWAY
 OKLAHOMA CITY, OKLAHOMA COUNTY, OKLAHOMA

DESIGNED BY
 DRAWN BY
 CHECKED BY
 APPROVED BY

DATE 09/0
 SCALE 1/
 PROJECT NUMB
 0000
 SHEET

A006



1 ENLARGED FLOOR PLAN - AREA B
 A007 1/4" = 1'-0"

PAYLESS STORAGE RENOVATION
 8821 NORTHWEST EXPRESSWAY
 OKLAHOMA CITY, OKLAHOMA COUNTY, OKLAHOMA

DESIGNED BY
 DRAWN BY
 CHECKED BY
 APPROVED BY

DATE 09/0
 SCALE 1/
 PROJECT NUMBER 0000
 SHEET A007